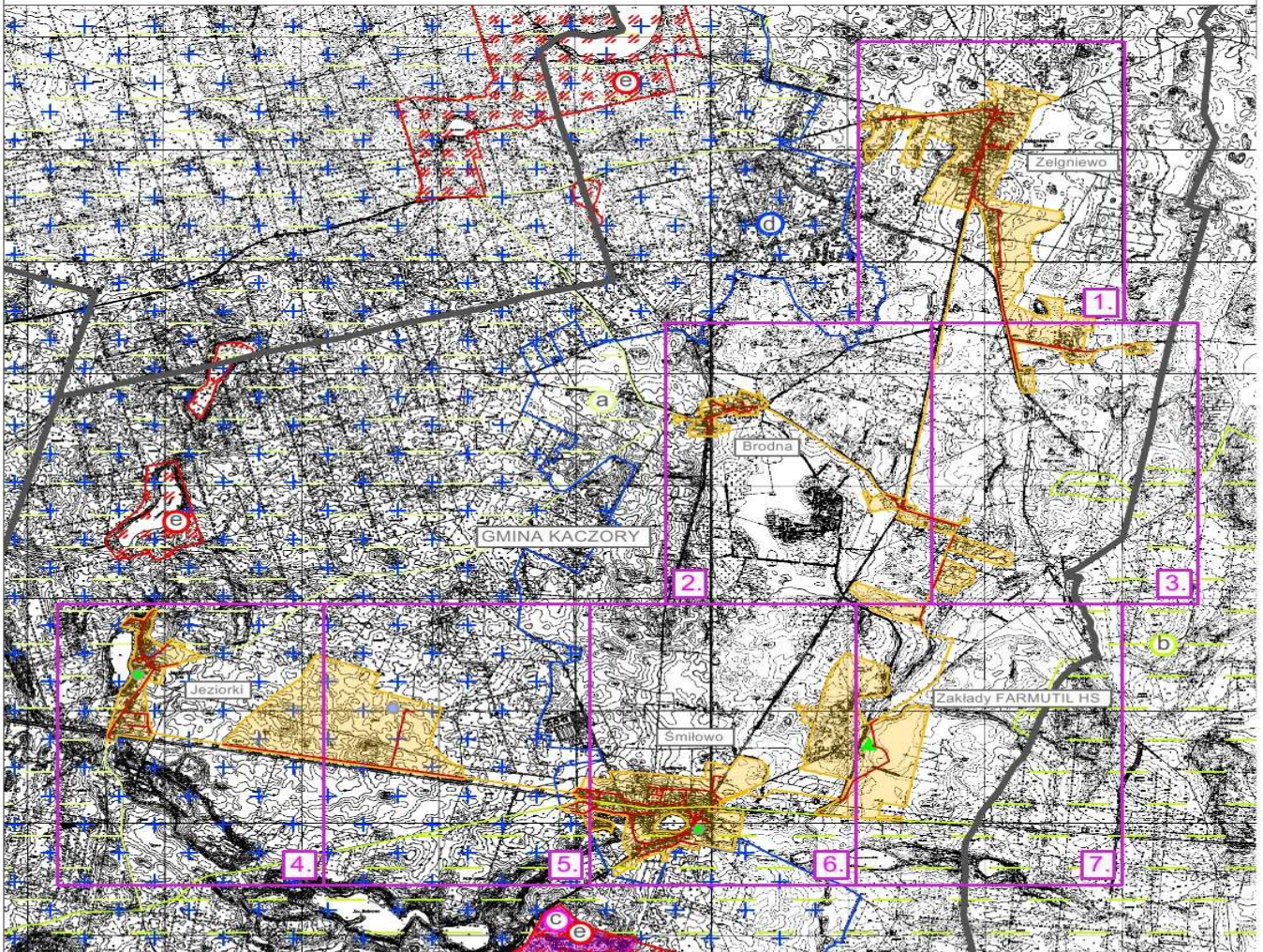

















Załącznik do uchwały Nr III/58/15
Sejmiku Województwa Wielkopolskiego
z dnia 26 stycznia 2015 roku

OBSZAR I GRANICE AGLOMERACJI ŚMIŁOWO

ARKUSZ 0



LEGENDA

- | | | | |
|---|--|---|---|
|  | OCZYSZCZALNIA ŚCIEKÓW |  | STREFA OCHRONY UJĘĆ WÓD - TEREN OCHRONY BEZPOŚREDNIEJ |
|  | GRANICE AGLOMERACJI |  | POMNIK PRZYRODY |
|  | OBSZAR AGLOMERACJI |  | GRANICE GMINY |
|  | ISTNIEJĄCA SIĘĆ KANALIZACYJNA |  | OBSZAR NATURA 2000 - OBSZARY SIEDLISKOWE
Ostoja Piłska - PLH300045 |
|  | OBSZAR CHRONIONEGO KRAJOBRAZU:
POJEZIERZE WAŁECKIE I DOLINA GWDY
DOLINA NOTECI |  | REZERWATY:
TORFOWISKO KACZORY |
|  | a |  | OBSZAR NATURA 2000 - OBSZARY PTASIE
Puszcza nad Gwdą - PLB300012 |
|  | b | | |
|  | c | | |
|  | e | | |

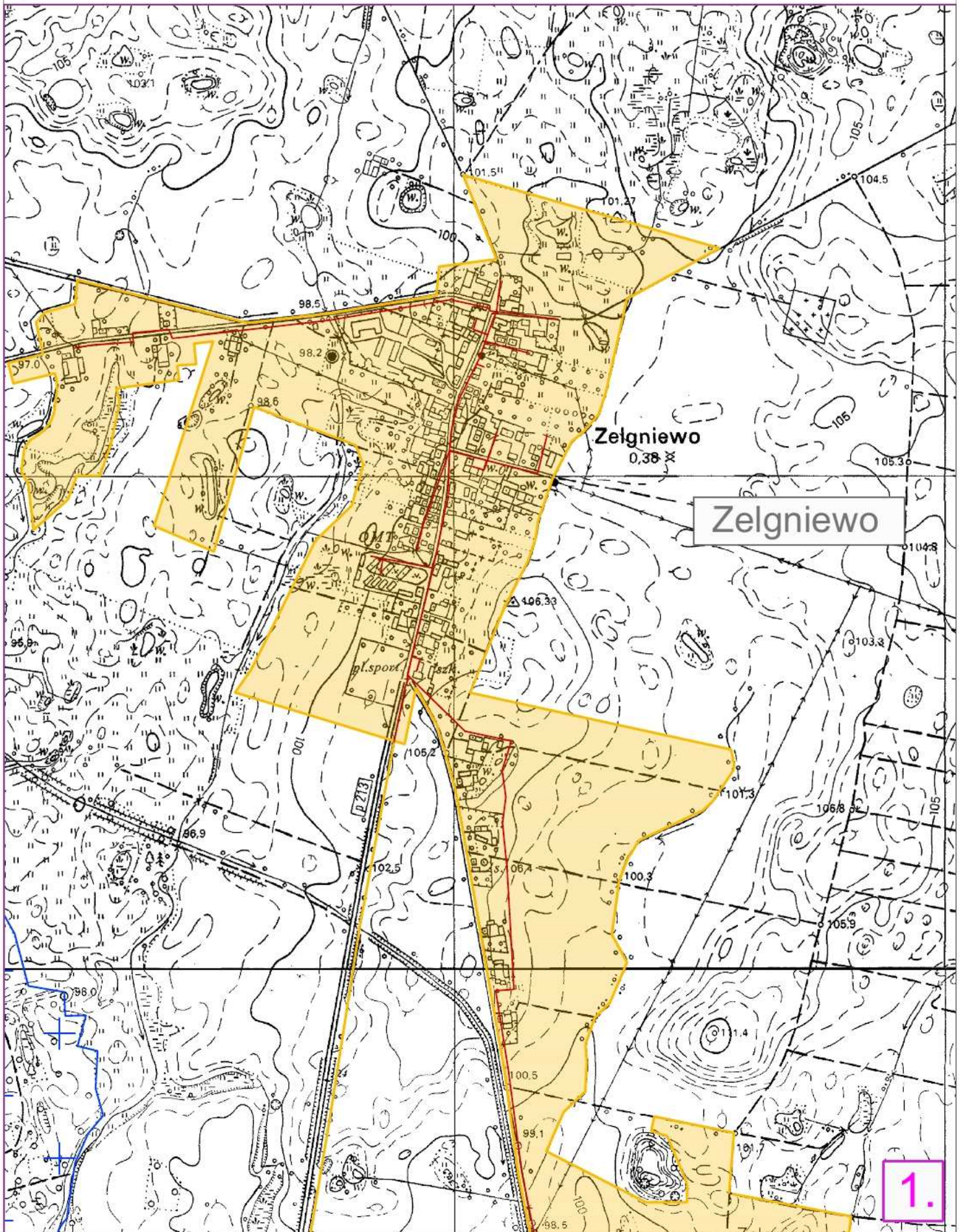
PODPIS OSOBY UPOWAŻNIONEJ DO REPREZENTOWANIA GMINY:.....

OBSZAR I GRANICE AGLOMERACJI ŚMIŁOWO

SKALA - 1: 10 000



ARKUSZ 1

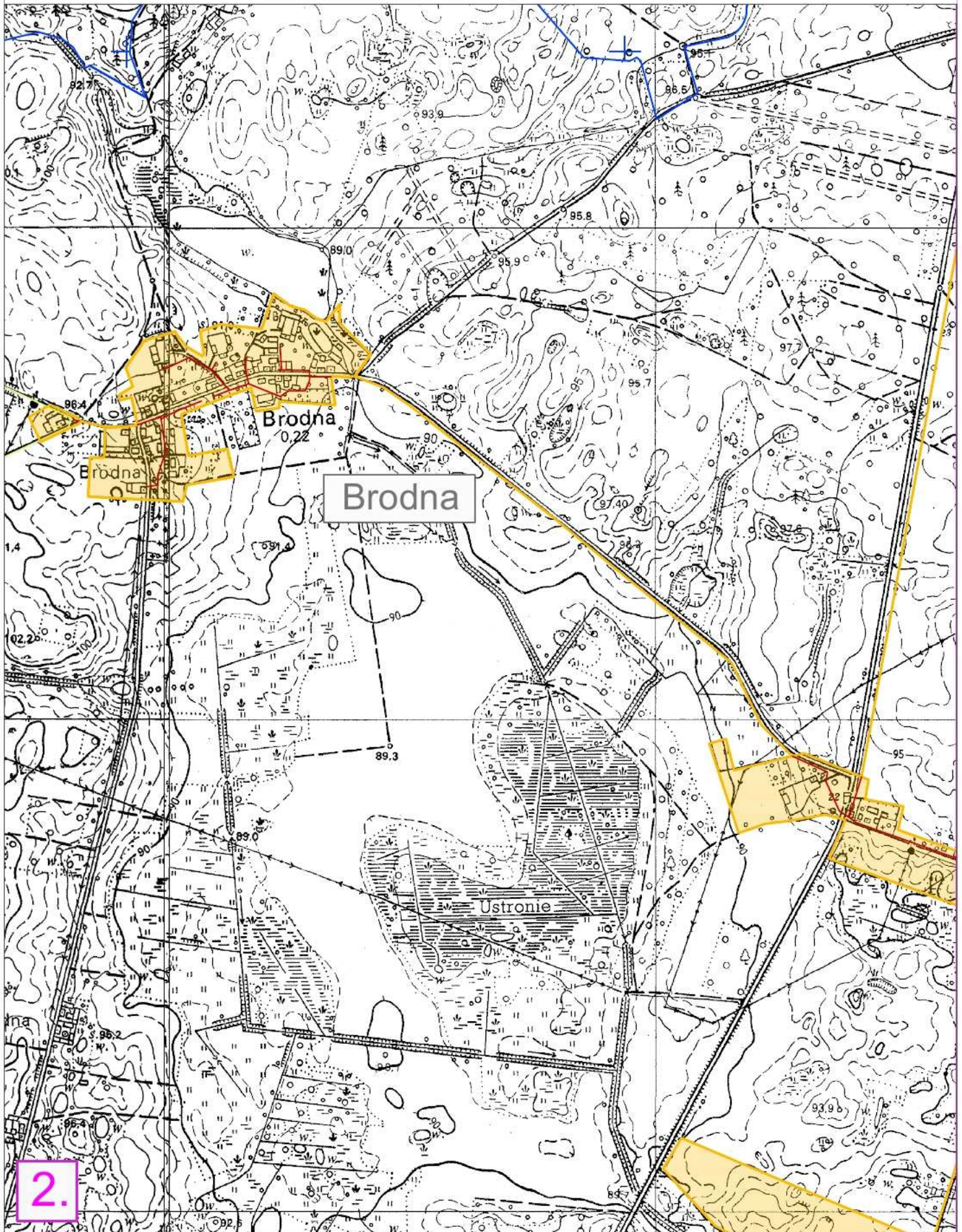


OBSZAR I GRANICE AGLOMERACJI ŚMIŁOWO

SKALA - 1: 10 000



ARKUSZ 2

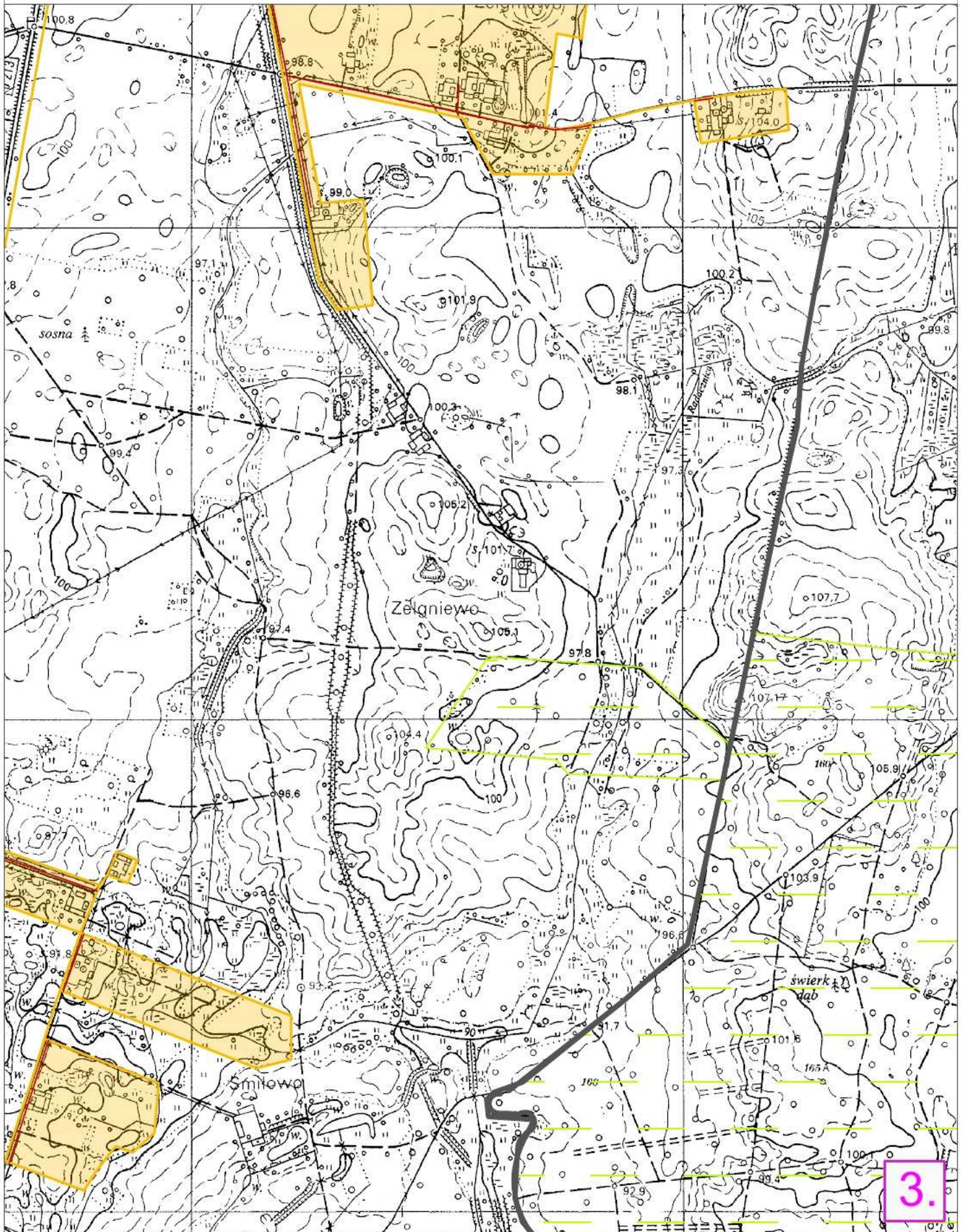


OBSZAR I GRANICE AGLOMERACJI ŚMIŁOWO

SKALA - 1: 10 000



ARKUSZ 3

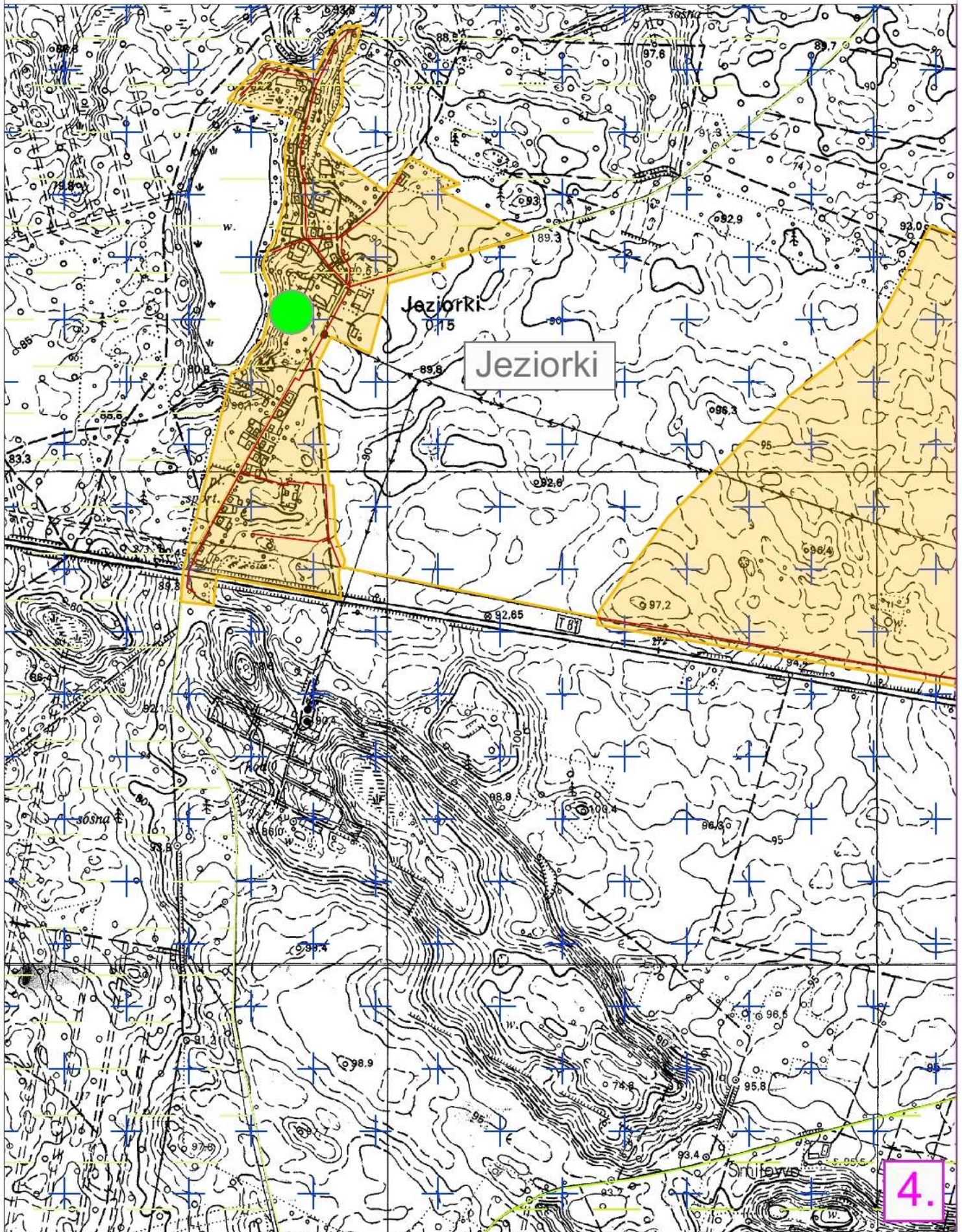


OBSZAR I GRANICE AGLOMERACJI ŚMIŁOWO

SKALA - 1: 10 000



ARKUSZ 4

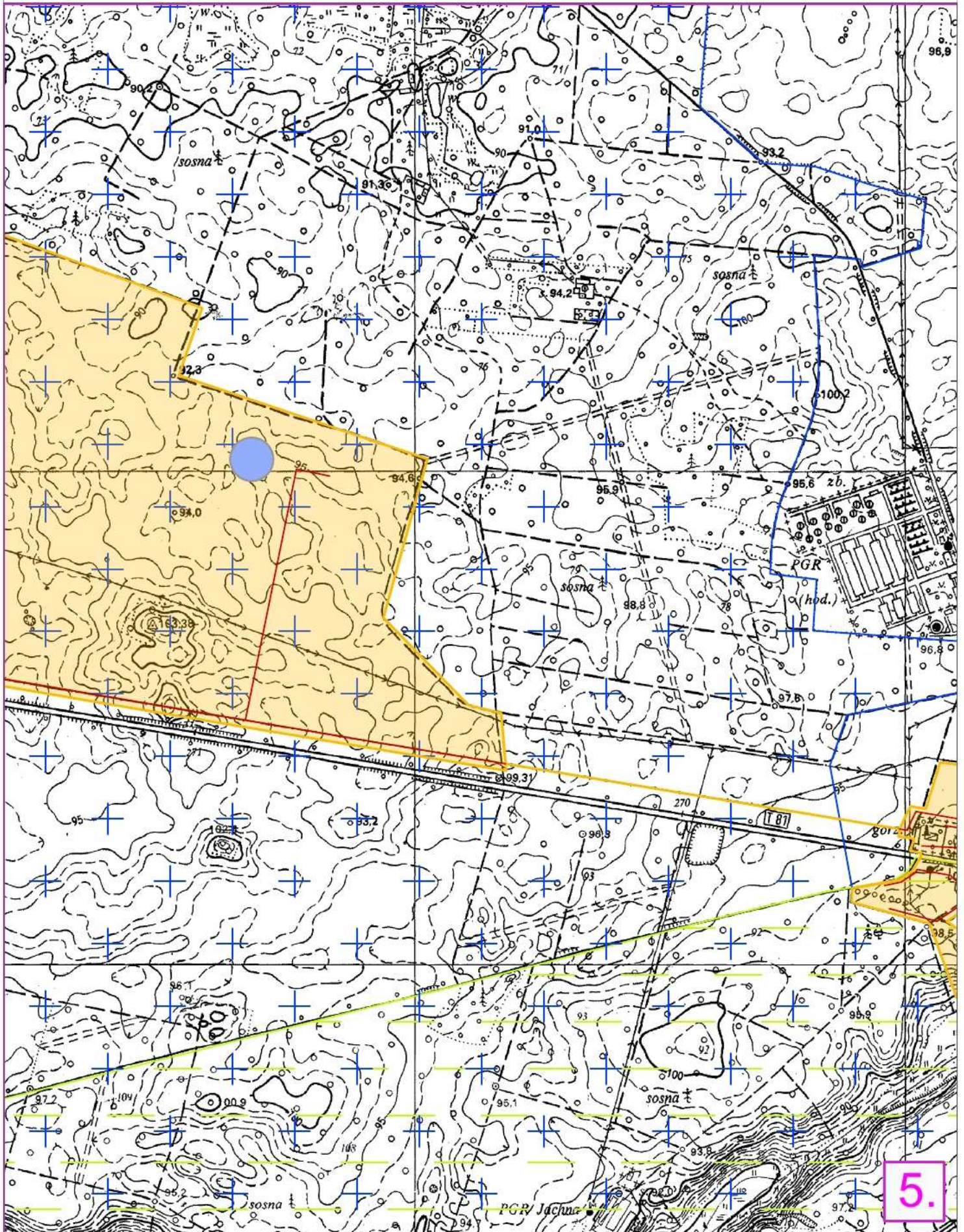


OBSZAR I GRANICE AGLOMERACJI ŚMIŁOWO

SKALA - 1: 10 000



ARKUSZ 5

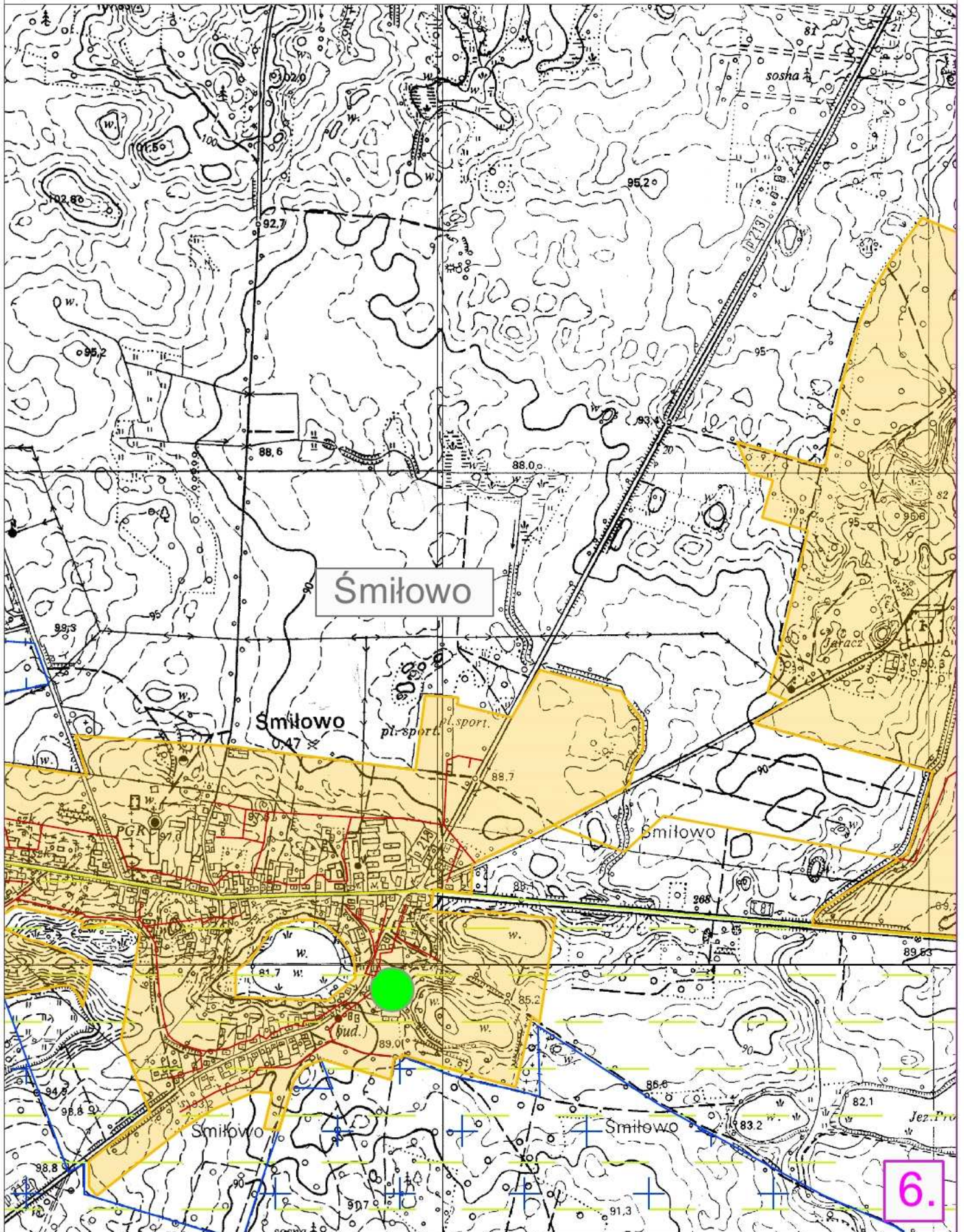


OBSZAR I GRANICE AGLOMERACJI ŚMIŁOWO

SKALA - 1: 10 000



ARKUSZ 6

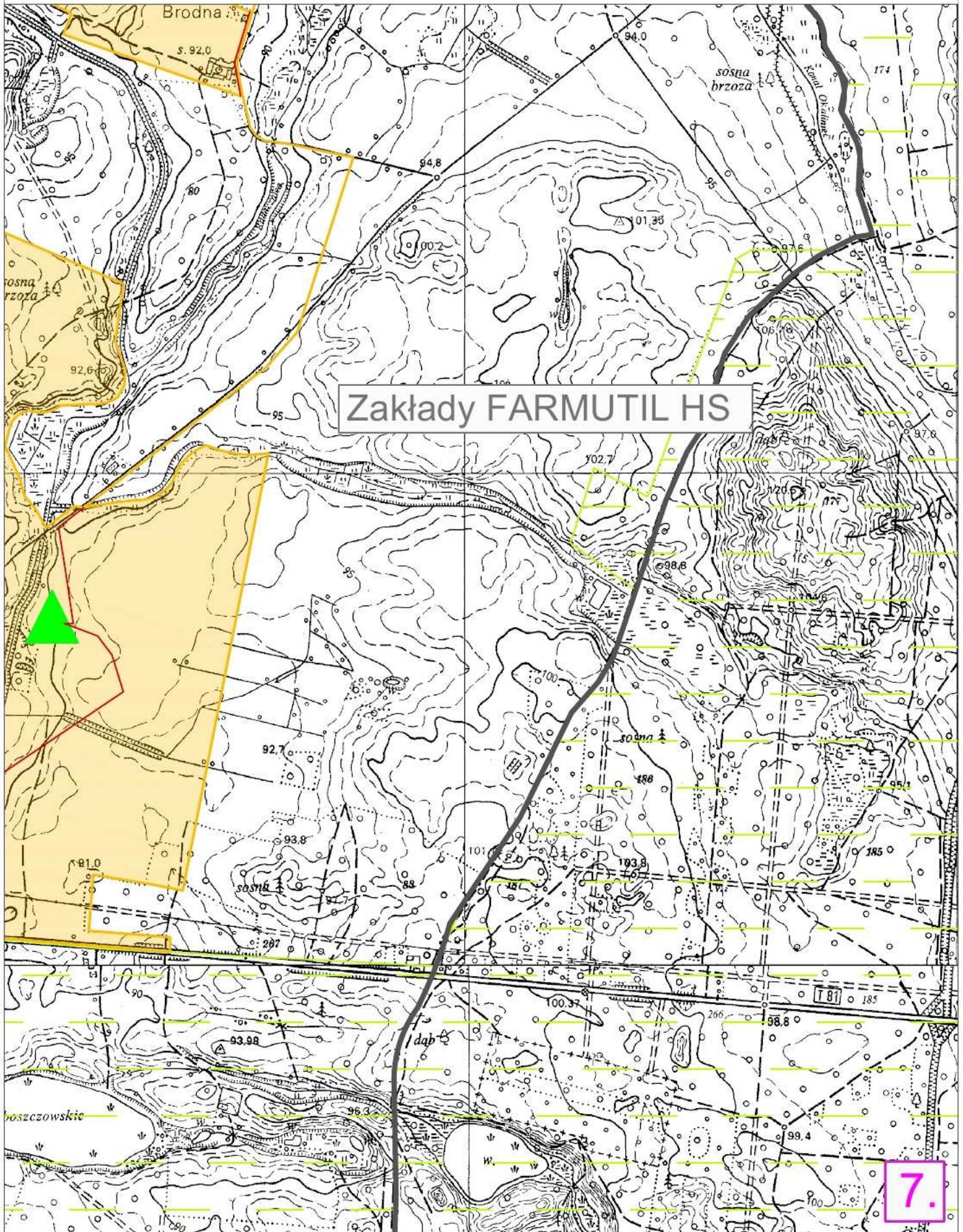


OBSZAR I GRANICE AGLOMERACJI ŚMIŁOWO

SKALA - 1: 10 000



ARKUSZ 7



7.